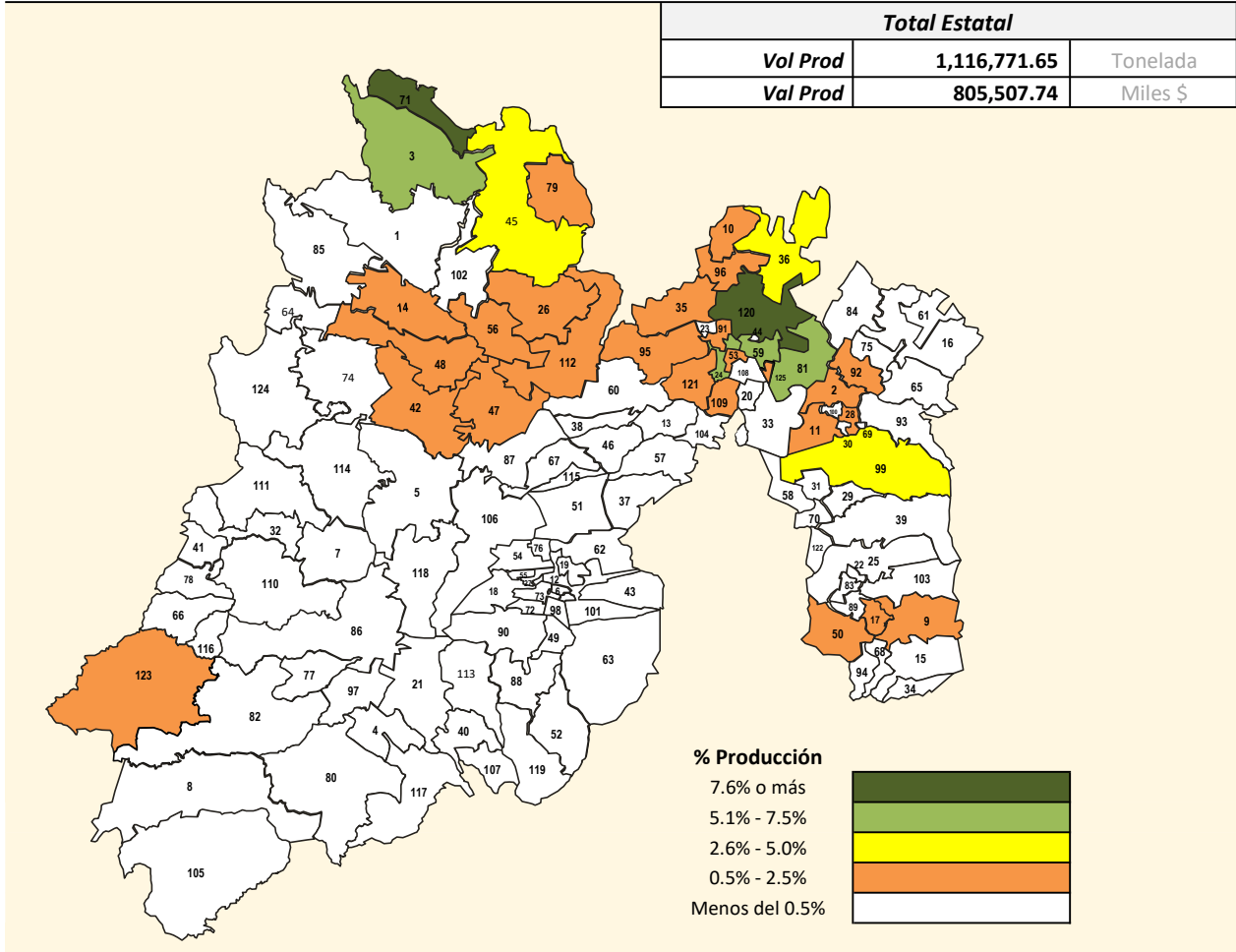


Vocación Productiva: Maíz forrajero en verde en el Estado de México



Fuente: Sistema de Información Agroalimentaria y Pesquera (SIAP, cierre 2023)

Elaborado: Subdirección de Información y Estadística

Departamento de Análisis y Estadística

Cve. Mpio.	Municipio	Superficie Sembrada (has)	Superficie Cosechada (has)	Producción Ton	Participación %	Valor de la Producción Miles de \$
Total Estatal		21,701.89	21,701.89	1,116,771.65	100.00	805,507.74
120	Zumpango	3,255.60	3,255.60	163,577.66	14.65	101,624.40
71	Polotitlán	3,275.00	3,275.00	147,353.75	13.19	136,218.16
59	Nextlalpan	1,355.00	1,355.00	79,240.40	7.10	47,267.69
3	Aculco	1,355.00	1,355.00	61,508.95	5.51	58,615.09
24	Cuautitlán	817.00	817.00	59,257.01	5.31	35,237.77
81	Tecámac	906.00	906.00	58,681.62	5.25	34,666.17
99	Texcoco	1,050.00	1,050.00	53,829.00	4.82	30,022.17
45	Jilotepec	762.00	762.00	36,421.80	3.26	34,760.01
36	Hueyoxtla	475.00	475.00	28,143.75	2.52	14,396.37
125	Tonanitla	407.00	407.00	25,791.59	2.31	13,161.19
91	Teoloyucan	387.00	387.00	24,906.28	2.23	15,050.26
2	Acolman	310.00	310.00	24,393.90	2.18	14,627.56

Cve. Mpio.	Municipio	Superficie Sembrada (has)	Superficie Cosechada (has)	Producción Ton	Participación %	Valor de la Producción Miles de \$
Total Estatal		21,701.89	21,701.89	1,116,771.65	100.00	805,507.74
96	Tequixquiac	343.00	343.00	23,883.09	2.14	14,116.10
95	Tepotztlán	492.00	492.00	22,623.00	2.03	13,842.72
42	Ixtlahuaca	365.00	365.00	21,619.25	1.94	25,943.10
10	Apaxco	300.00	300.00	20,598.00	1.84	12,273.32
123	Luvianos	509.55	509.55	19,643.15	1.76	15,950.24
14	Atlacomulco	405.00	405.00	19,462.50	1.74	26,213.85
11	Atenco	368.00	368.00	19,407.86	1.74	9,668.25
47	Jiquipilco	341.00	341.00	17,843.58	1.60	19,713.00
79	Soyaniquilpan de Juárez	326.00	326.00	14,490.12	1.30	13,781.49
109	Tultitlán	232.00	232.00	13,644.50	1.22	8,282.29
9	Amecameca	310.00	310.00	13,320.70	1.19	7,844.69
35	Huehuetoca	286.00	286.00	11,744.00	1.05	7,099.09
48	Jocotitlán	173.00	173.00	9,100.70	0.81	11,816.88
121	Cuautitlán Izcalli	167.00	167.00	8,996.86	0.81	5,597.70
53	Melchor Ocampo	124.00	124.00	8,928.00	0.80	5,306.27
28	Chiautla	164.00	164.00	8,373.35	0.75	4,151.02
17	Ayapango	160.00	160.00	7,040.00	0.63	3,990.55
50	Juchitepec	134.00	134.00	6,623.62	0.59	3,423.95
92	Teotihuacán	118.00	118.00	6,609.58	0.59	3,943.77
112	Villa del Carbón	145.00	145.00	6,545.05	0.59	6,326.25
26	Chapa de Mota	132.00	132.00	6,210.00	0.56	5,742.22
56	Morelos	124.00	124.00	5,619.68	0.50	7,024.60
93	Tepetlaoxtoc	121.00	121.00	5,368.20	0.48	2,704.32
103	Tlalmanalco	120.00	120.00	5,340.00	0.48	3,054.59
88	Tenancingo	175.79	175.79	5,267.64	0.47	3,130.70
29	Chicoloapan	120.10	120.10	4,851.79	0.43	2,380.70
25	Chalco	120.00	120.00	4,476.00	0.40	2,296.01
82	Tejupilco	130.65	130.65	4,206.93	0.38	3,533.82
102	Timilpan	73.00	73.00	3,157.25	0.28	2,903.03
21	Coatepec Harinas	104.65	104.65	2,871.69	0.26	1,684.13
108	Tultepec	45.20	45.20	2,862.98	0.26	1,729.87
83	Temamatla	66.00	66.00	2,094.18	0.19	1,068.03
69	Papalotla	40.00	40.00	1,908.70	0.17	929.45
23	Coyotepec	60.00	60.00	1,800.00	0.16	1,091.03
39	Ixtapaluca	37.50	37.50	1,755.00	0.16	842.40
74	San Felipe del Progreso	34.00	34.00	1,561.62	0.14	1,530.39
68	Ozumba	35.00	35.00	1,435.00	0.13	724.68
30	Chiconcuac	26.05	26.05	1,229.35	0.11	604.86
40	Ixtapan de la Sal	34.83	34.83	1,122.68	0.10	702.57
44	Jaltenco	18.00	18.00	1,023.66	0.09	612.81
86	Temascaltepec	24.97	24.97	991.31	0.09	817.83
4	Almoloya de Alquisiras	27.48	27.48	990.95	0.09	675.96
105	Tlatlaya	27.27	27.27	983.08	0.09	786.46
8	Amatepec	22.57	22.57	973.36	0.09	784.48
107	Tonatico	31.08	31.08	904.30	0.08	490.05
117	Zacualpan	23.61	23.61	805.10	0.07	470.98
113	Villa Guerrero	22.63	22.63	755.11	0.07	455.12
116	Zacazonapan	22.00	22.00	506.00	0.05	469.32
66	Otzoloapan	22.60	22.60	496.52	0.04	332.54
77	San Simón de Guerrero	13.18	13.18	471.45	0.04	377.16
119	Zumpahuacán	15.08	15.08	419.30	0.04	215.16
106	Toluca	8.00	8.00	364.00	0.03	224.97
20	Coacalco de Berriozábal	4.50	4.50	239.40	0.02	134.76
33	Ecatepec de Morelos	2.00	2.00	106.80	0.01	51.37